

ENTREE / EST

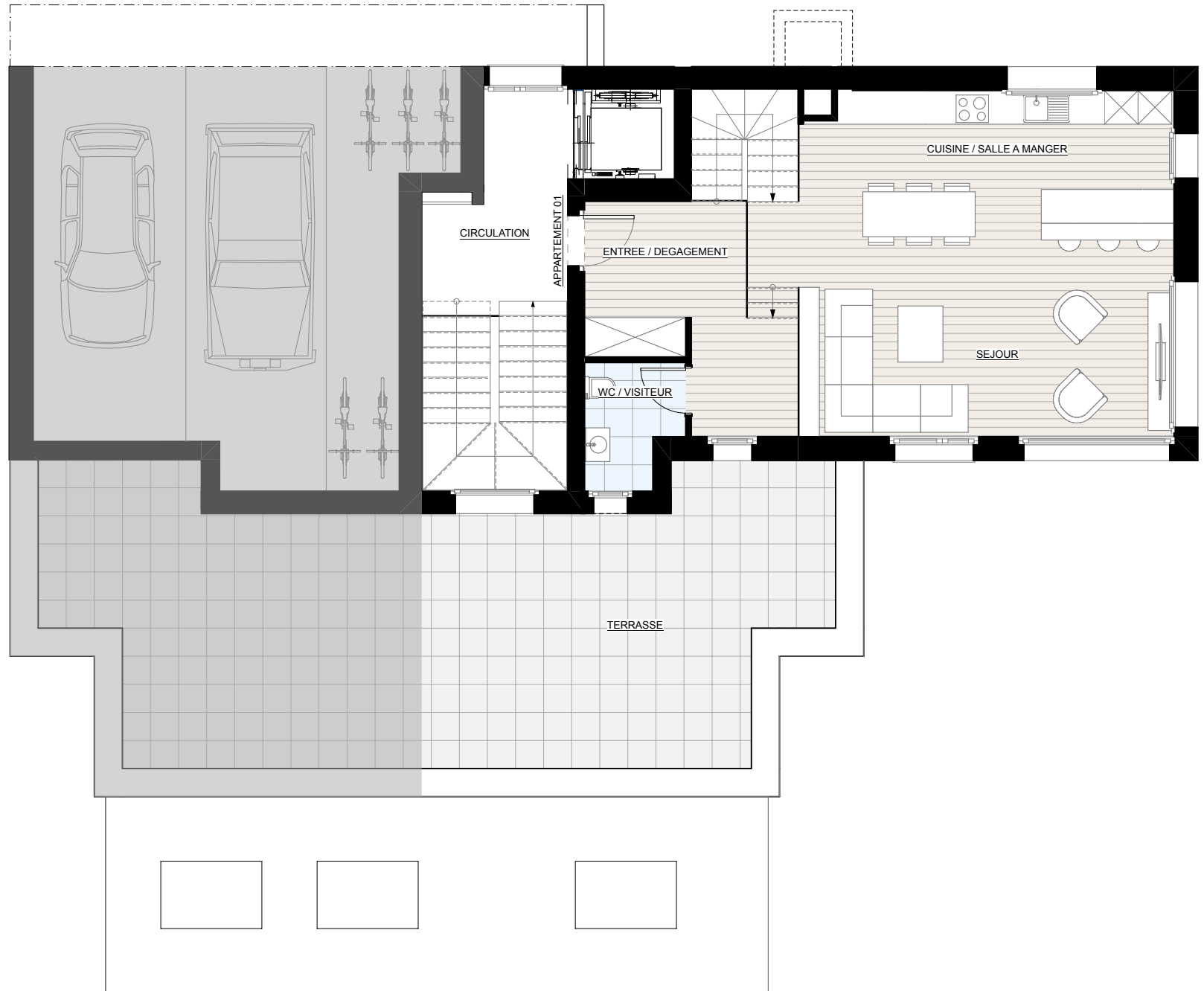
Duplex 01

3 pces 1/2

Surface brute : 75.07m²

Surface terrasse : 39.75m²

Surface totale : 141.42m²



N



Echelle 1/100

REZ SUP. / EST

Duplex 01

3 pces 1/2

Surface brute : 66.35m²

Surface terrasse : 39.75m²

Surface totale : 141.42m²



N



Echelle 1/100